
H&S and Management

Church of Ss Philip and James,
Kings Road, Fleet

In case of fire

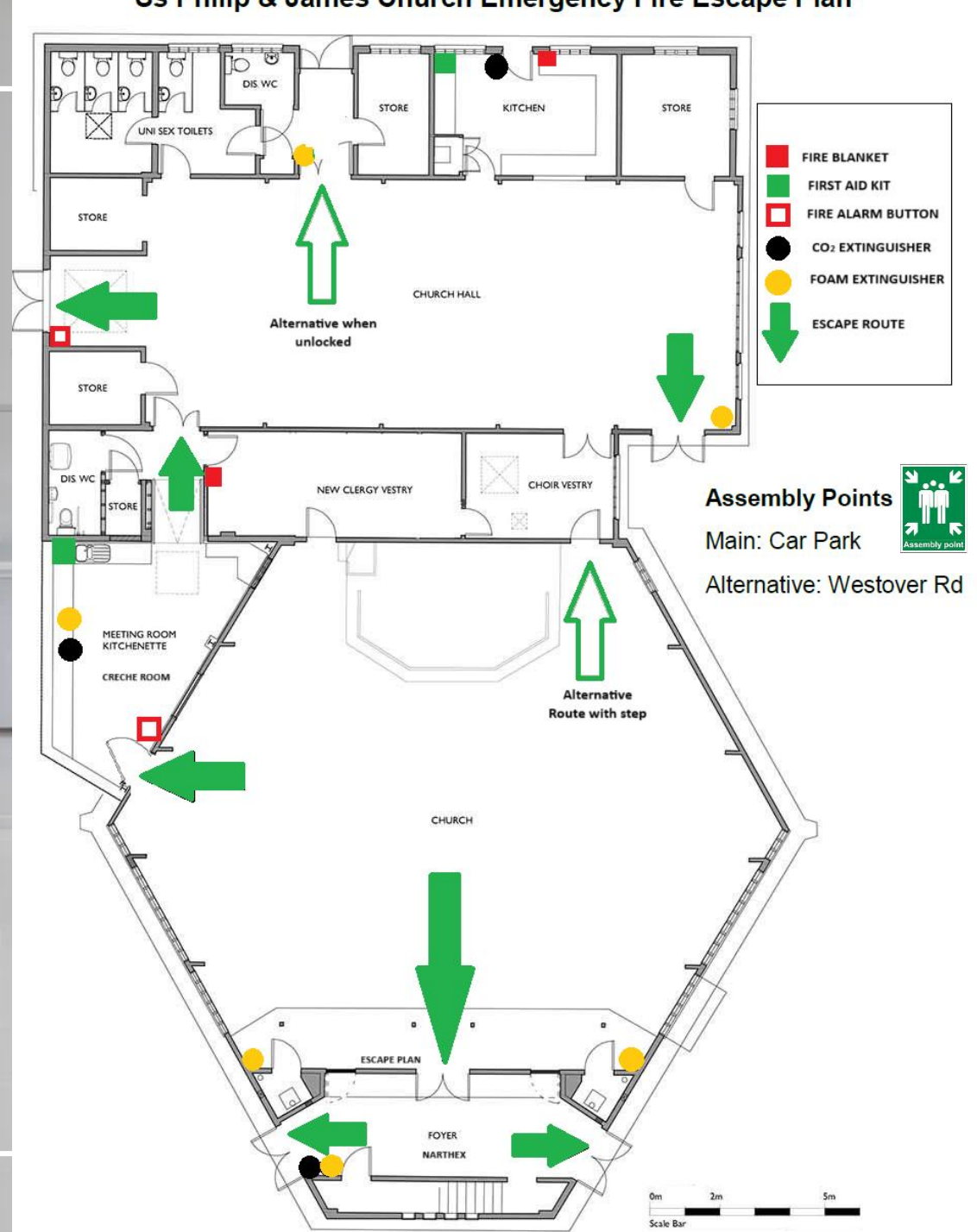


A vertical fire action sign with a white background and a blue header. At the top is a blue circle with a white exclamation mark. Below the header are seven rows, each with an icon on the left and text on the right. The first three rows have blue backgrounds for the text, and the last two have red backgrounds. The sign is set against a background of intense orange and yellow flames.

Fire Action

-  **Raise the alarm** Shout "FIRE!"
-  **Call the Fire Brigade** by dialling
-  **Leave the building by the nearest available exit**
-  **Report to assembly point**
-  **Do not return to the building until authorised to do so**
-  **Do not use lifts**

Emergency Fire Escape Plan

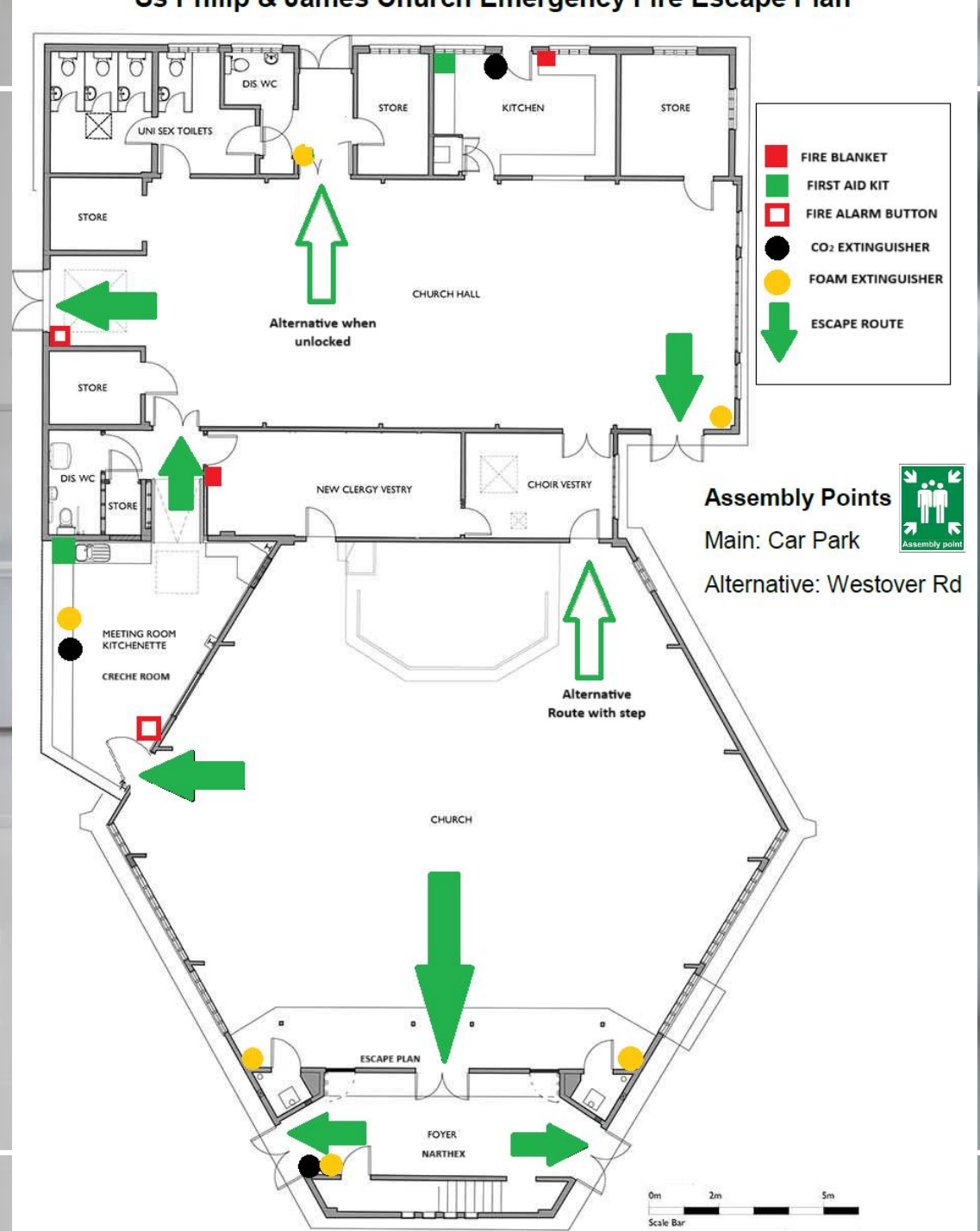


Assembly point:

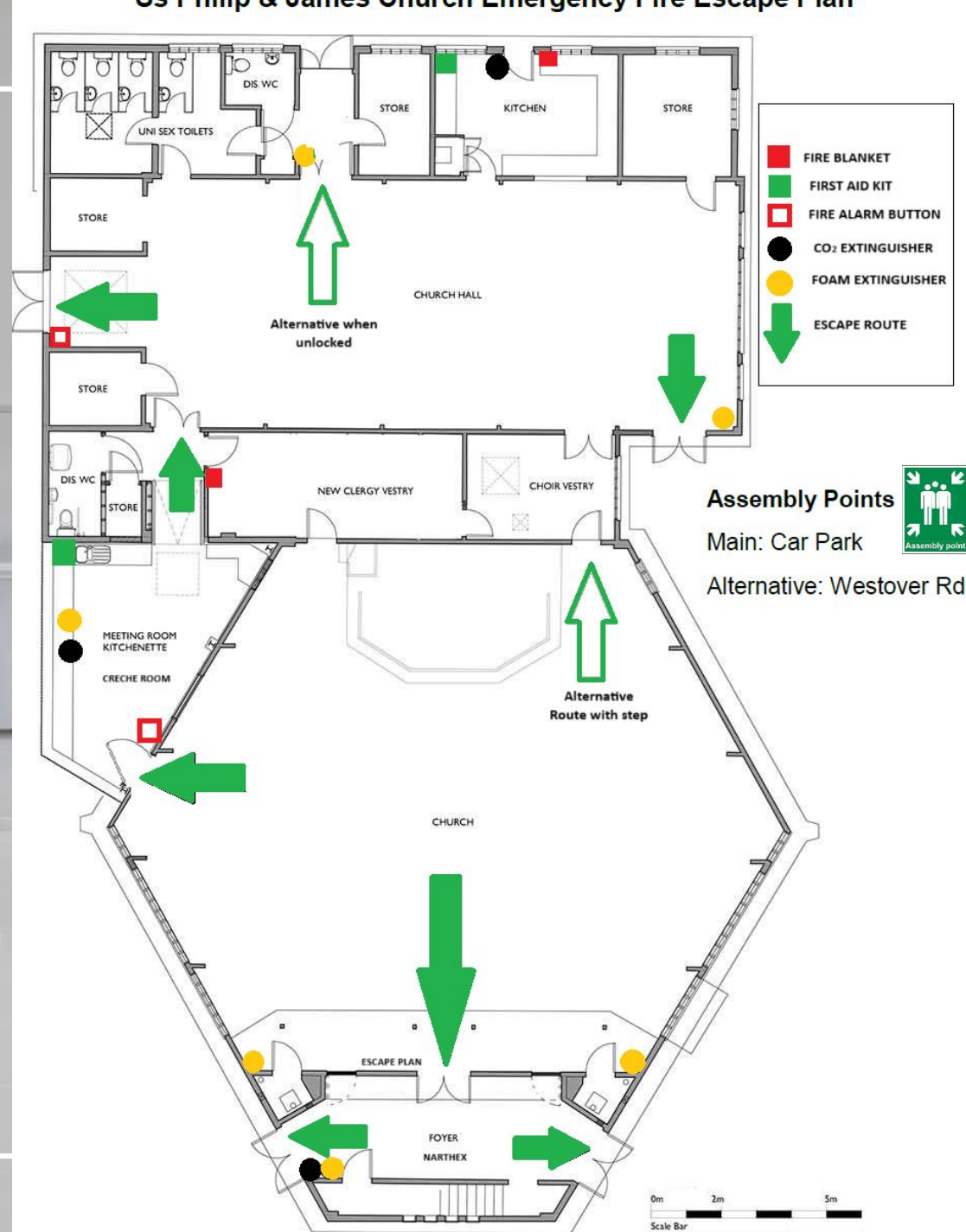
Car park or
Westover Road



Fire Policy:
Evacuate!
Do not try to
save the
building.



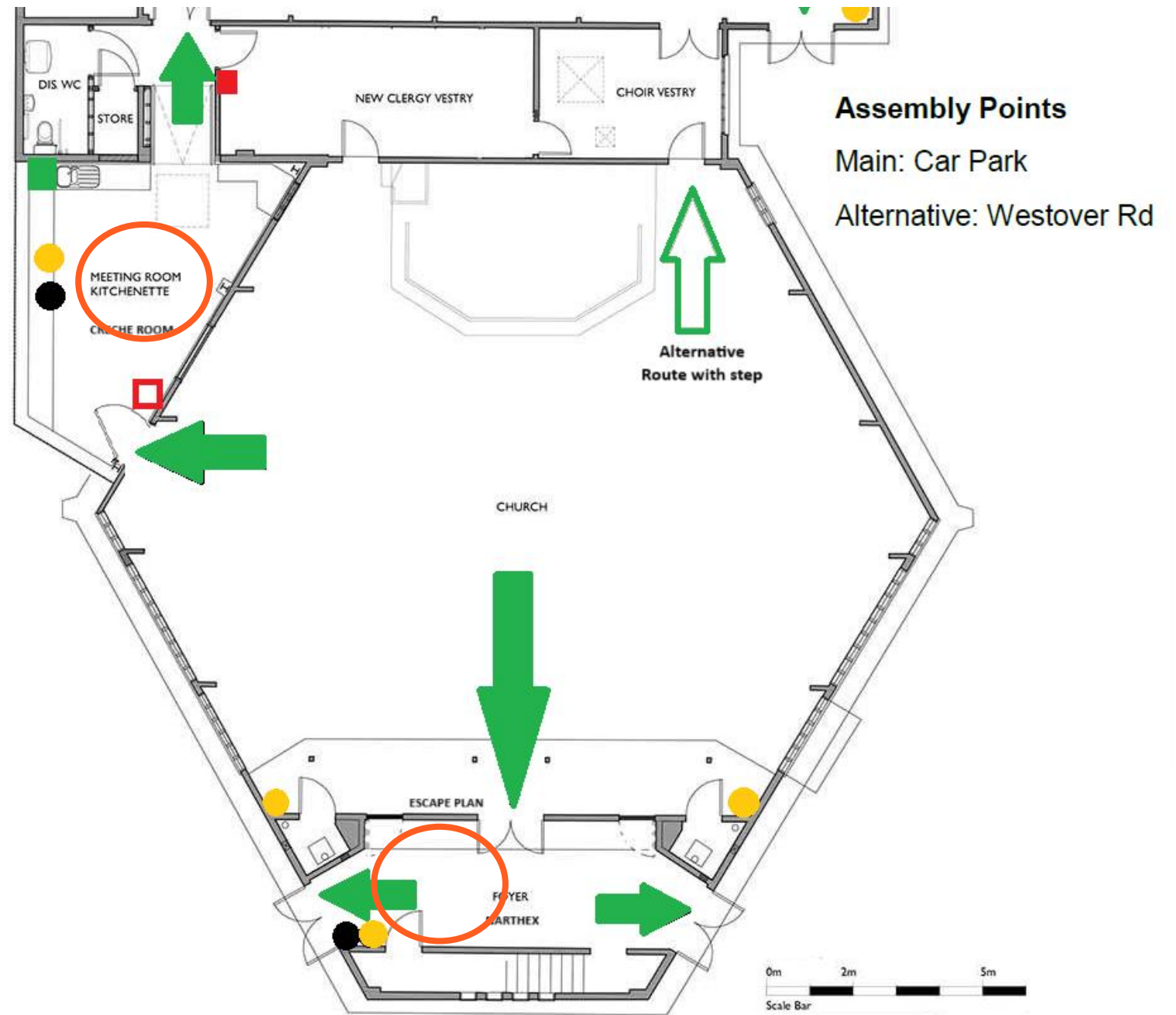
However, if safe to use them, there are: fire extinguishers, fire blankets and First Aid kits.



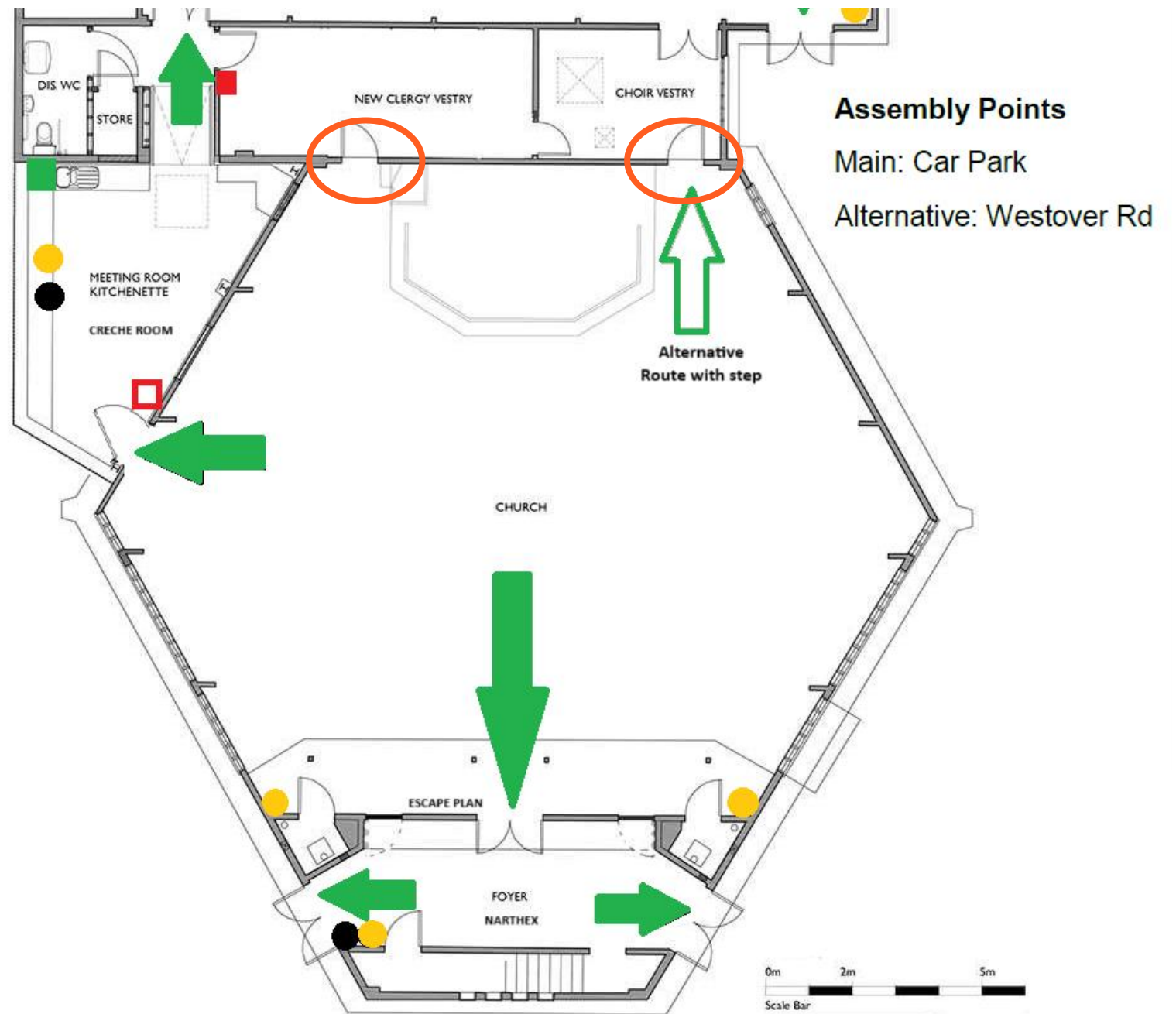
Caution



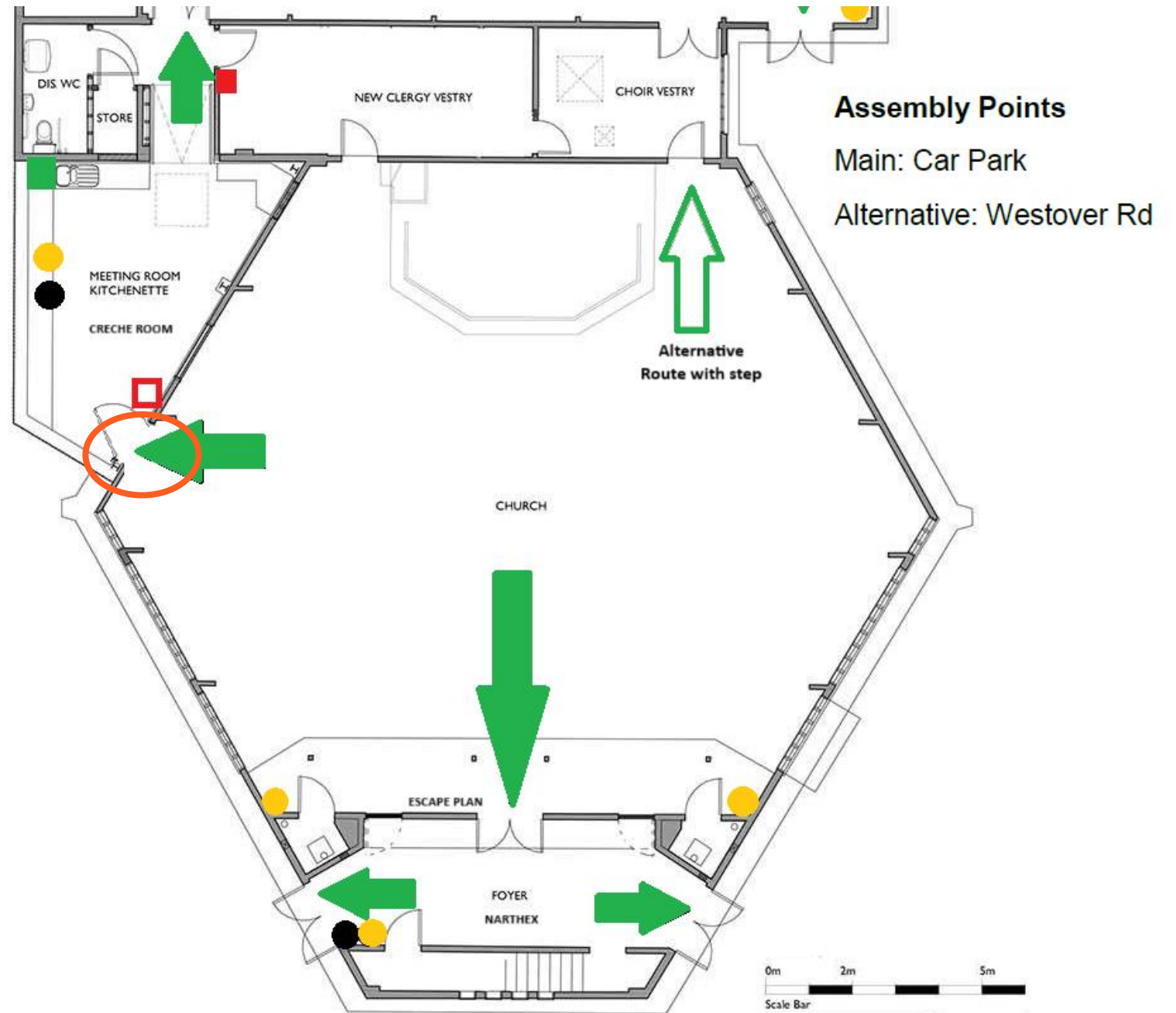
Do not
block
access to
Fire Exits



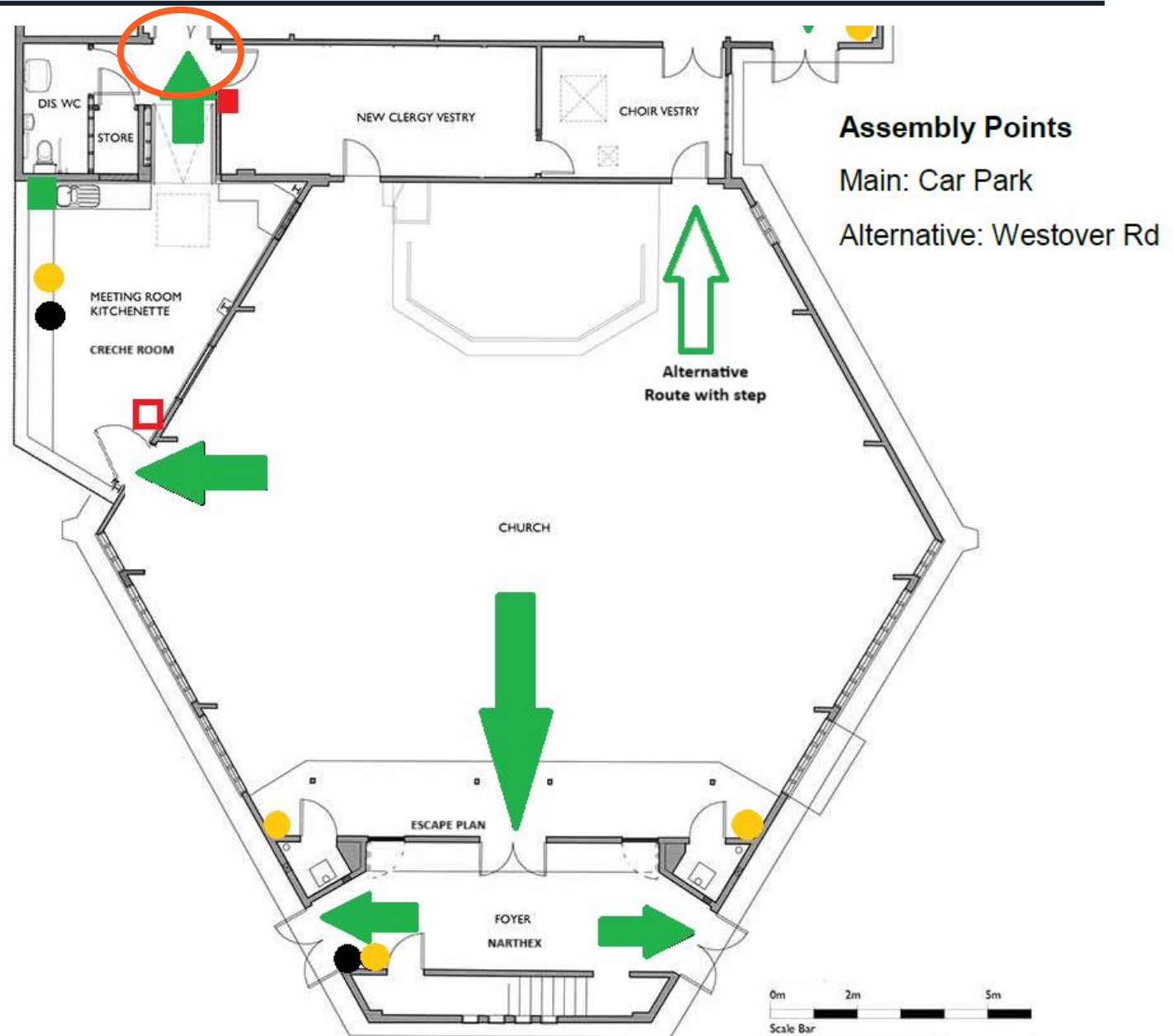
Steps



Unlock



In an emergency, unlock (manual thumb-turn)





Management

Please leave the church as you found it:

- clean, tidy and with seats in the same place as you found them.
- turn the heating down using the instructions.

Please treat the church and its equipment (piano, microphones, altar, furniture, etc) with respect.

The background features a complex arrangement of interlocking dark grey gears of various sizes. In the center-right, a golden compass rose is visible, showing cardinal and intercardinal directions (N, NE, E, SE, S, SW, W, NW) and a scale of numbers from 01 to 10. The overall lighting is dim, with the golden compass rose providing a focal point of brightness.

Thank you

The Parish of Fleet is delighted that our buildings can be used to serve our community.

You are most welcome!