

BOOSEY'S MODERN FESTIVAL SERIES

No 487

The little road to Bethlehem

Arranged for S. A. T. B.

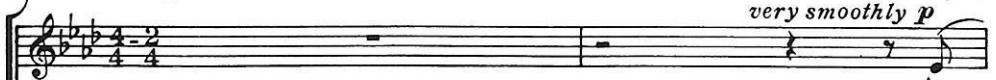
Words by
MARGARET ROSE

Music by
MICHAEL HEAD

Moderato, tempo giusto (♩ = circa 54)

Key A♭ { | : | : | : | : .s, }

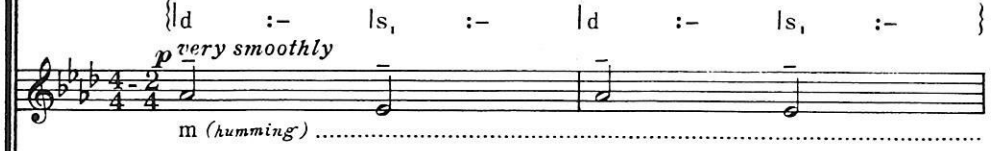
SOPRANO



ALTO



TENOR



BASS



PIANO
(for practice
only)



Published as a song in A♭ and F.

IMPORTANT NOTICE. The unauthorised copying of the whole or any part of this publication is strictly forbidden under the Copyright Act.

Copyright 1948 in U. S. A. by Boosey & Co Ltd.
Copyright for all countries

All rights reserved
Tonsättning förbjudes
Printed in England

Sole Selling Agents: BOOSEY & HAWKES MUSIC PUBLISHERS Ltd.,

B. & H. 16324

{ d .d :m .r | d .t, :l, .l, | s, :- .s, | d .d :s .f | m .r, d :r .r }

I walked down the road at set of sun, The lambs were coming home-wards, one by

{ m, .f, :s, .f, | m, .d, :r, .f, | m, .r, d, :r, .m, | f, .m, :f, .s, | l, :s, }

{ d :- | s, :- | - :- | d :- | m :r }

{ s, .l, :t, .l, | s, .m, :f, | s, .f, m, :f, .s, | l, .s, :l, .t, | d :t, }

{ d :- .m | l, .l :s .m | m ., r :d (r m | r :- .s, }

poco cresc.

one, I heard a sheep-bell soft - ly call - ing them A -

{ f, .m, r, :m, .s, | l, .l, :t, .t, | d ., t, :l, :- s, | l, :s, .s, }

poco cresc.

I heard a sheep-bell soft - ly call - ing them..... A -

{ d :- | - :t, | d .r :m | l, :t, }

poco cresc. (✓)

{ l, .s, f, :s, .d | m :- | l, .t, :d .m, | f, .r, :s, .f, }

poco cresc.

very smoothly

{ d .d :s .f | m .r, d :r .r | d :- | : }
dim.
 - long the lit - tle road to... Beth - le - hem.
 { s, .s, :t, .l, | s, :- .f, | m, :- | : }
dim.
 - long the road to Beth - - le - hem.
 { d :- | - .l, :t, | d :d | r :- .d }
dim.
 A - - long the road to
 { m, :f, | s, :s, } { d :d | r :- .d }
 { d, .r, :m, .f, | s, .l, :t, .d }
dim. (Melody)
 A - - long..... the..... road..... to

{ : p, s, | m, :f, .s, | m, :f, | s, .l, :t, .s, }
 Be - side..... the door, as I drew nigh, I
 { : .s, | d .d :m .r | d .t, :l, .t, .l, | s, :- .s, }
mp
 Be - side an o - pen door, as I drew nigh, I
 { d :t, | d :- | - :d | s :- .f }
p
 Beth - le - - hem. I heard sweet
 { m :r | d :l, .t, | d :- | - :s, }
 { f, .r, :s, | d, :- | - :r, | m, .f, :s, }
p
 Beth - le - - hem..... I heard... sweet

heard... a lul - la - by.
heard sweet Ma - ry sing a... lul - la - by.
Ma - - ry sing a lul - la - by. She
Ma - - - - - ry sing.

Descant Ah *poco cresc.*
pp And rocked her ti - ny King a - mong the
p poco cresc. At close of day... a - mong... the
poco cresc. sang a - bout the lambs at close of day And rocked... her...
p poco cresc. At close... of... day... And rocked... her

2 Pulse measure 3 P.m. 2 P.m.

pp *pp*

hay. A -

hay, and..... rocked..... her King.....

(Melody)

King, and rocked her King a - - mong the

King,.... and..... rocked..... her King a - - mong the

4 P.m. poco rit.

- cross the air the sil-ver sheep-bell rang, "The lambs are com-ing home," sweet Ma-ry

pp *pp* *pp*

hay. m.....

hay..... m.....

poco rit.

Poco meno mosso

{ | d :- .m | l .l :s .m | d' .t :l .l | s .m :m .r , d | l , :t , .s , }

sang, "Your Star of gold, your Star of Gold is shi-ning in the sky,..... So

{ | - :s , | l , .d :t , .r | d :t , | t , .t , :l , .m , | f , : - .r , }

..... "Your Star of gold, your Star is shi-ning in the sky,..... So

{ | - :m | :m | m :r | r :d .l , | m :r .t , }

"Your Star is in..... the sky,..... So

{ | d :- | : .m , | l , .s , :f , .f , | m , : - | r , } { :s , .f , }

..... "Your Star of gold is shi-ning, So

Poco meno mosso

Piano accompaniment for the first system, featuring a melody in the right hand and a bass line in the left hand, both in a 3/4 time signature.

poco rit.

Tempo I

{ | d .d :s .f | m .r , d :r .r | d :- | : }

sleep, my lit - tle King, go... lul - la - by."

{ | s , :t , .l , | s , : - .t , | d , :d , | s , : - .l , }

sleep, lit - tle King,..... sleep, my King, go

{ | d :- .r | m .f :s .f | m :- | r :- .m }

sleep,..... lul - la - by,..... go

{ | m , :f , | s , : - | d , .r , :m .f , | s , .l , :t , .d }

sleep,..... sleep, my..... King,..... go

poco rit.

Tempo I

Piano accompaniment for the second system, continuing the melody and bass line from the first system.

{ | : | : .s, { | d .d : m .r | d .t, : l, .l, | s, : - .s, }
 Descant (*ad lib.*) *pp* lul - - la - - by.....
 As I walked down the road at set of sun, The
 { | s, .f, : s, .d, | m, : r, | m, .f, : s, .f, | m, .d, : r, .f, | m, .r, d, : r, .m, }
 lul - - la - by..... m.....
 { | r .d : r .d | l, : t, | d : - | s, : - | - : - }
 lul - - la - by..... m.....
 { | t, .l, : t, .d | f, .r, : s, | d, .l, : t, .l, | s, .m, : f, | s, .f, m, : f, .s, }
 lul - - la - by..... m.....

{ | - .d : - .f | m .r, d : r .r | d : - .m }
 lambs were com - ing home - wards, one by one. I
 { | f, .m, : f, .s, | l, : s, | f, .m, r, : m, .s, }
 I
 { | d : - | m : r | d : - }
 { | l, .s, : l, .t, | d : t, | l, .s, f, : s, }
 I

|| 1 : s m | m , r : d r m | r : - s, | d d : s f | m r, d : r r }
poco cresc. pp Ah *poco cresc.* *dim.* - - -

heard a sheep-bell soft - ly call-ing them A - long the lit - tle road to Beth - le -
 || d d : r r | d : t, - t, | l, : t, s, | s, s, : d - l, : t, t, }
poco cresc. *dim.* - - -

heard a sheep-bell call - - ing them..... A - long the road to Beth - le -
 || - : t, | d r : m | f m : r | d : - r | m f : s t, }
 (✓) *poco cresc.* *dim.* - - -

|| l, : t, | d r : m | f m : r | d : - : s, }
 || l, d, : m, s, | l, t, : d d, | f, r, s, f, | m, : - f, | s, : s, }
 (✓) *poco cresc.* *dim.* - - -

A - -

|| m r : d | t, l, : s, | l, : t, | d : d | s : - d | m : r | d : - ||
 || d : - : - : - e - rit. - - - - - *ppp*

pp

- hem, The lit - tle road to Beth - le - hem.
 || s, : - | : : : r, | m, f, s, l, | t, l, : s, s, | l, : s, f, | m, : - ||
pp e - rit. - - - *ppp*

- hem, The lit - tle.... road..... to Beth - le - hem.
 || d : d | r : - d | d : r : t, } | d : d | r : - d | d : t, | s, : - ||
 (Melody) e *pp* rit. - - - *ppp*

- long the road to Beth - le - hem, the road to Beth - le - hem.
 || d, r, : m, f, | s, l, : t, d | f, r, : s, | d, r, : m, f, | s, l, : t, d | f, s, | d, : - ||
 e *pp* rit. - - - *ppp*

- long.. the.... road..... to Beth - le - hem, the... road..... to Beth - le - hem.

Application for permission to perform this work in public should be made to
 The Performing Right Society Ltd., 29-33 Berners St., London, W.1.

The little road to Bethlehem

Printed by Halstan & Co. Ltd., Amersham, Bucks., England

ISMN M-060-03244-8



9 790060 032448